

TAKE A SELF TEST

You can use this sampling kit to genitally (penis) test for **Chlamydia** and **Gonorrhoea**.

Your body material will be examined at our laboratory (ISO-15189). The results are authorised by a microbiologist. You can ask for the result via **testalize.me/uitslag** by using the code on the code card.

Testalize.me | Rotterdam | The Netherlands | <https://testalize.me>

Revised on: 11-11-2020 | Storage conditions of the sampling test: 15°C to 30°C | Transport condition of the return box: 1°C to 30°C



testalize.me

INSTRUCTIONS

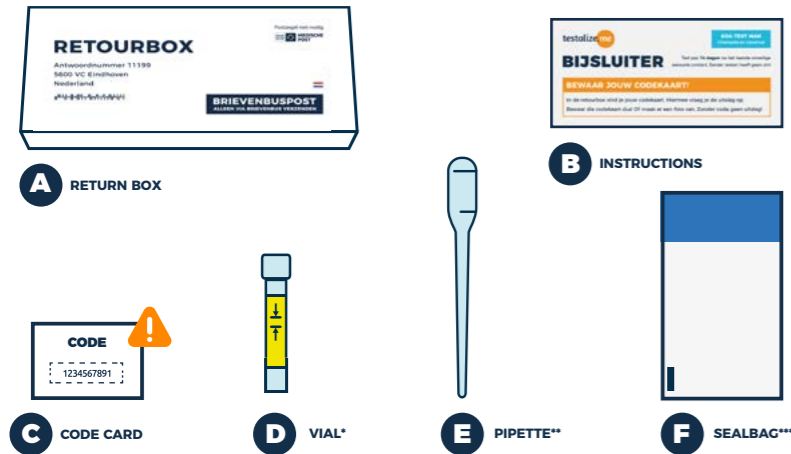
KEEP YOUR CODE CARD!

You will find your code card in the return box. You can use it to ask for the result. So keep that card! Alternatively, take a picture of it. No code? No result!

STD TEST FOR MEN
Chlamydia and Gonorrhoea

You can take the test as late as
14 days after you last had unsafe sex.
There is no point in taking the test earlier!

USE



* vial Aptima® Urine Specimen Transport Tube | Hologic Inc.

** pipette | Hologic Inc.

*** sealbag | Daklapack



Remove the code card (C) from the return box (A) and keep this code!

Leave the fluid in the vial (D) and avoid skin contact. Do not ingest.



Make sure you did not go to the toilet for at least an hour. Take a clean cup (such as a disposable cup) and catch the first drops/flow of your urine (no more than 30 ml).



Open the vial. Use the pipette (E) to transfer 2 ml of urine to the vial. The urine should reach up to between the black lines.



Securely close the vial. Place it in the sealbag (F) and seal the bag. Place the sealbag in the return box and close the box.



MAIL THE RETURN BOX 

Request the results within 48 hours of receipt (Mon-Fri) with your code card via testalize.me/uitslag.